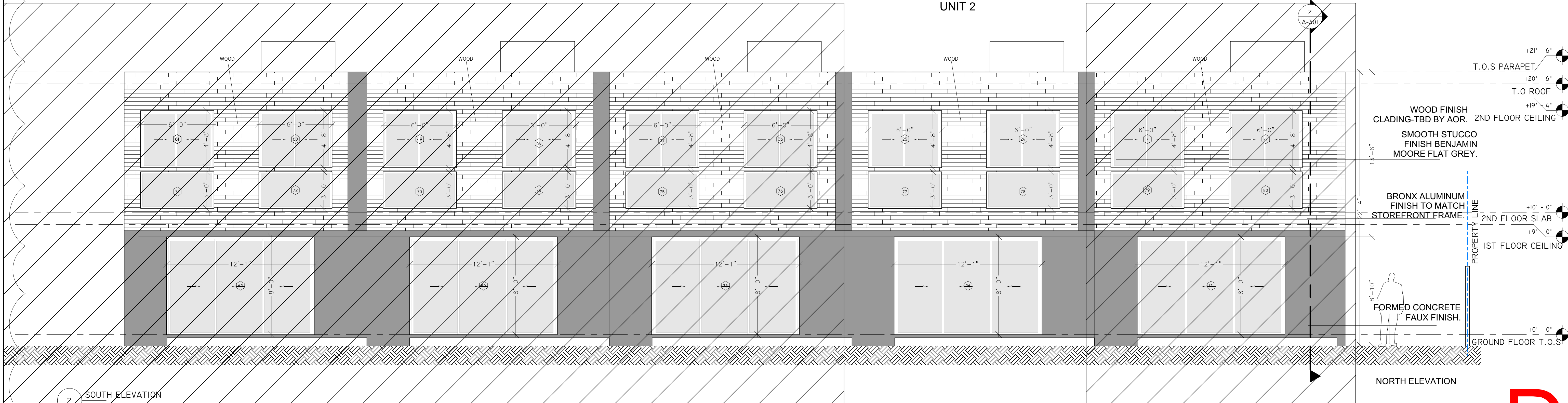


1 WEST ELEVATION
1/4" = 1'-0"

UNDER SEPARATE PERMIT

UNIT 2

UNDER SEPARATE PERMIT



2 SOUTH ELEVATION
1/4" = 1'-0"

KEYPLAN

Alioskar
Ganem
Osorio
Digitally signed by
Alioskar Ganem
Osorio
Date: 2024.06.14
11:34:31 -04'00'

CONSULTING ENGINEER



ALIOSKAR GANEM P.E.
FL LIC. NO. 74745

ECO POMPANO TOWNHOME
DEVELOPMENT

3225 NE 5TH ST. POMPANO
BEACH, FL. 33062 UNIT 2

NOTES/COMMENTS

1 06-07-24

REVISIONS / SUBMISSIONS

DRAWN BY: AG
CHECKED BY: AG
INITIAL DRAWING
RELEASE DATE: ISSUE DATE

ELEVATION